

XR-Series will be there for you – today and tomorrow

XR-Series

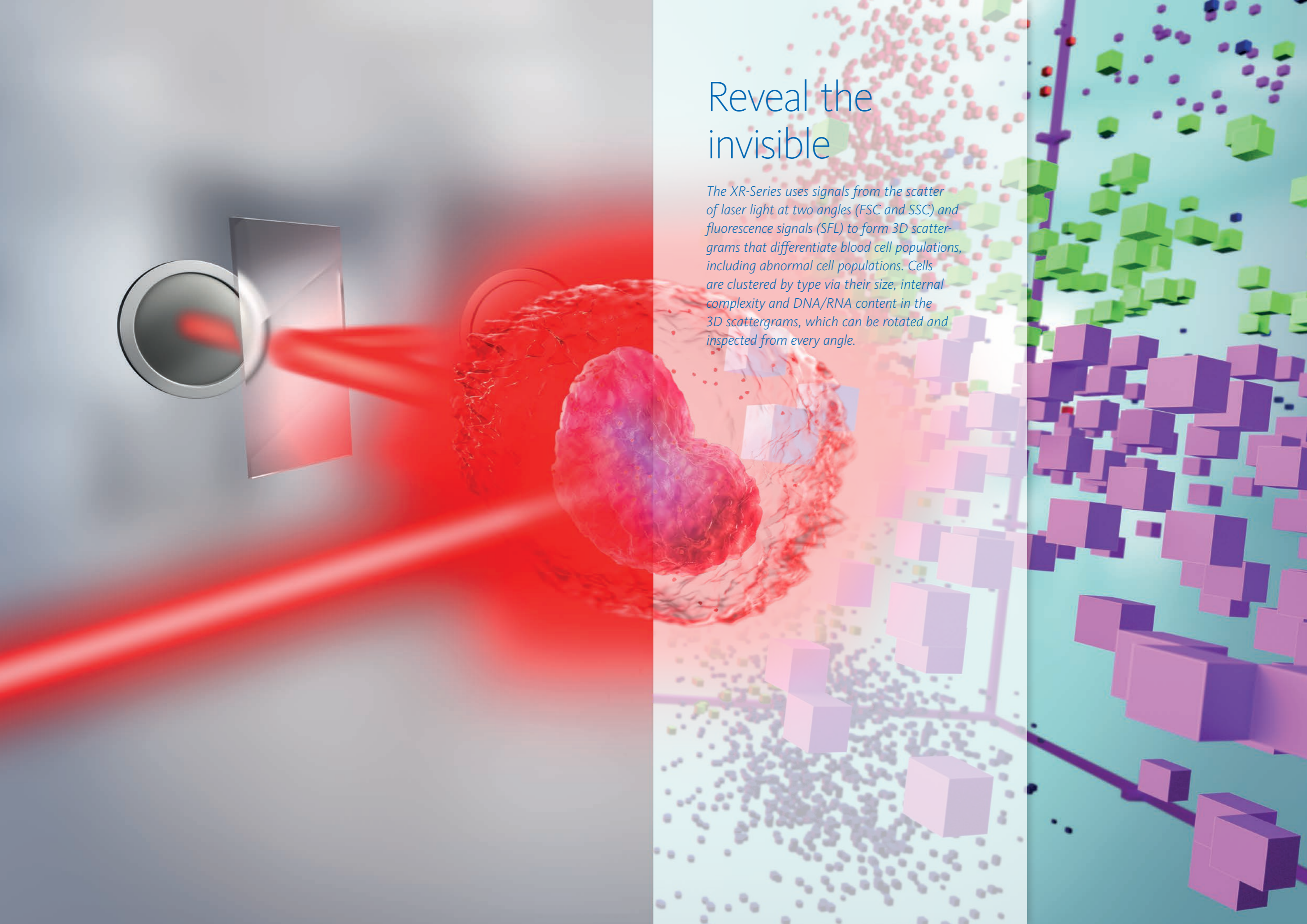




Good to know:
XR-Series is here

XR-Series is Sysmex's new flagship product line for laboratory haematology. XR-Series has evolved from XN-Series – it draws on XN's legacy by incorporating the many strong points that customers have come to appreciate and rely on in labs across the globe. Tailoring your haematology is still at the forefront to give you new, useful assets and improved throughput to achieve the perfect fit for any laboratory.

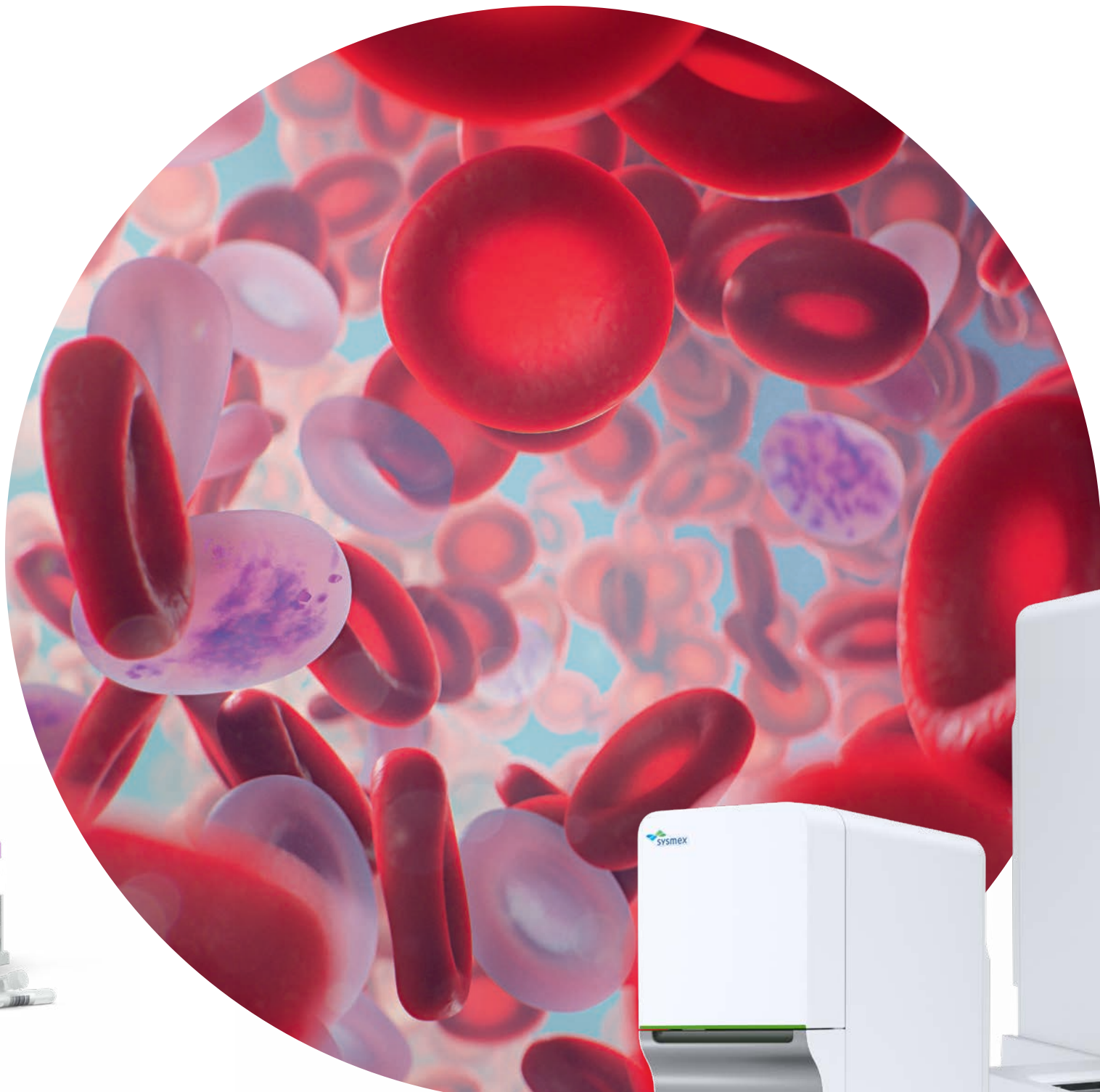




Reveal the invisible

The XR-Series uses signals from the scatter of laser light at two angles (FSC and SSC) and fluorescence signals (SFL) to form 3D scattergrams that differentiate blood cell populations, including abnormal cell populations. Cells are clustered by type via their size, internal complexity and DNA/RNA content in the 3D scattergrams, which can be rotated and inspected from every angle.

Solutions from XR-Series



XR-1000 Pure

The XR-1000 Pure is the entry model of Sysmex's XR-Series flagship haematology range. It makes XR technology affordable for a wider range of laboratories with moderate sample workloads or budgets. There are also optional analytical applications for automated measurement of both reticulocytes and body fluids.

Always there in every XR

- ✓ NRBC and IG determination



XR-1000

The XR-1000 is a fully scalable, single-unit haematology analyser, ideal for that first step into automation. Turnaround time is kept quick by minimising manual work steps and performing extended measurements only when they offer additional analytical value.

Available add-on components

- ✓ Analytical applications
- ✓ Extended IPU
- ✓ SP-50 and DI-60 can be added later on

XR-2000

The XR-2000 is a fully scalable, double-unit standalone haematology analyser that combines two analysis modules that process samples simultaneously. The two modules cooperate to distribute work efficiently, including reflex measurements, making the XR-2000 a great solution for basic and extended haematology testing.



Blood counters deserve love, too

Enter the captivating world of Sysmex Smear Workflow solutions

The judgment of an abnormal blood smear is an art. Therefore, a well-made blood smear is essential for optimal microscopy examination. With the Sysmex Smear Workflow, we make this possible.

Do you need that extra bit of automation and worry-free walkaway time when it comes to smear review? The DI-60 might be the right match for your XR-Series analyser.

sysmex



XR-1500

The XR-1500 is a reliable solution to automate your smear-making and staining, thereby decreasing turnaround time and manual errors. You save time and resources thanks to the advanced technology and flagging that reduces the need for smears while onboard rulesets automate their processing. With the integral SP-50 being available in two throughput versions, you can select the one that fits best to your lab's smear rate.

SP-50

The following configurations feature an integral SP-50, a high-quality, fully integrated slide preparation unit. Choose the configuration you would like to install as SP-50 comes with different throughput options – you define settings for sample volume, speed and angle of the spreader blade. Auto-adapted to the HCT value of each blood sample, the length of the smear ensures a wide monolayer area for performing the blood cell differential count. No matter whether it's built into your analyser or you decide to add it later, you will be impressed by the consistent high quality of your smears and stains with the SP-50.

DI-60

The DI-60 is an automated, cell-locating image analysis system which is connected directly to the SP-50, therefore eliminating the need for manual intervention in the haematology workflow in the imaging cycle. It locates cells on the stained slides with the automated microscope and high-quality digital camera, and pre-classifies cells using advanced artificial neural network technology.



XR-3000

The XR-3000 includes two XR analysis modules and the SP-50, with samples needing a smear review being automatically transferred. The two modules offer peace of mind in daily routine thanks to the built-in back-up solution, meaning turnaround times remain quick. *Extended* IPU is an integral component of all XR-3000 configurations, managing the sample and data workflow, as well allowing for pre-configured rule sets for validation.

Available add-on components

- ✓ Analytical applications
- ✓ *Extended* IPU for XR-1500
- ✓ DI-60 can be integrated from the start, or added later on

Great for your lab, great for patients

At Sysmex, the patients' well-being is the driving purpose behind our advancement of healthcare. XR-Series delivers high-quality diagnostic support in the shortest possible time through an optimised workflow, which supports not only the laboratory staff but also the clinicians treating their patients.



