



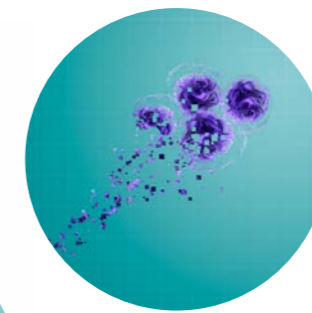
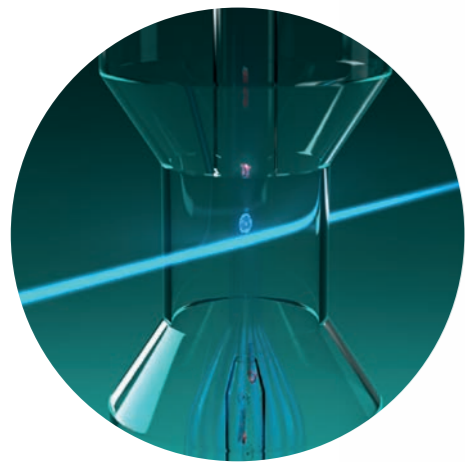
Fully automated urine particle analyser

UF-1500



Proven technology, compact size

The UF-1500 is an ideal solution for small to medium-sized labs seeking the latest in urinalysis technology to automate manual workflow procedures. Despite being ~ 30 % smaller than our flagship model UF-5000, the UF-1500 delivers the same quality and reliability using proven fluorescence flow cytometry (FFC) technology.



Enhance the value of urinalysis in clinical decision making

Urinary Tract Infections (UTI)

The UF-1500 eases the burden of laboratory technicians by ruling out UTI in less than a minute and highlighting samples with suspicion of UTI for subsequent and targeted diagnostics. The UF-1500 is also equipped with the 'BACT Info' flag which provides additional morphological information for detected bacterial cells.

Bladder cancer

The UF-1500 comes equipped with the Atyp.C research parameter which has the potential to detect urinary atypical cells that are suspicious of malignancy by fluorescence flow cytometry in correlation with an increased nucleic acid content and nucleus-to-cytoplasm ratio.

Chronic Kidney Disease (CKD)

The diagnostic capabilities of the UF-1500 combined with the UC-3500, can support the early detection of CKD to improve patient care. For extended diagnostics beyond the detection of albuminuria on the UC-3500, the UF-1500 can provide deeper insights into kidney abnormalities through RBC-related parameters.



UF-1500

Automate and standardise manual workflow procedures



UF-1500 + sampler unit

For a higher level of automation



UF-1500 + UC-3500

Automate your entire urinalysis workflow from chemistry testing to particle analysis



Find your
perfect match

Key benefits

- ✓ Compact size
- ✓ Fast and reliable particle analysis with fluorescence flow cytometry
- ✓ Advanced parameters to support clinical decision making
- ✓ Automate and standardise manual workflow procedures
- ✓ Flexible configuration options to find your perfect match



Specifications

Technologies	fluorescence flow cytometry with blue semi-conductor laser and hydrodynamic focussing in two different channels conductometry
Parameters (urine) Diagnostic	RBC, NL RBC, WBC, WBC Clumps, EC, Squa.EC, Non SEC, Tran.EC, RTEC, CAST, Hy. CAST, Path. CAST, BACT, X'TAL, YLC, SPERM, MUCUS
Research	SRC, Atp.C, Cond., Osmo., SF_TC, CW_TC, CB_TC, SF_OTHERS, CW_OTHERS, DEBRIS, RBC-P70FSC, RBC-FSC-DW, Large RBC, Small RBC, Lysed RBC
Throughput	60 samples/hour (max.)
Sampling volume	2 mL (sampler mode), 0.6 mL (STAT mode)
Aspiration volume	0.68 mL (sampler mode), 0.52 mL (STAT mode)
Sampler unit capacity (SA-52)	50 samples (entry area), 50 samples (exit area)
Interface (optional)	U-WAM
Web application (optional)	Caresphere™ XQC
Dimensions/weight W × H × D [mm/kg]	analyser: approx. 550 × 630 × 560/52 main unit (incl. SA-52): 630 × 630 × 626/60 pneumatic unit: 280 × 400 × 355/17



Discover more on our website
www.sysmex-europe.com/UF-1500