

## Wondering how to cope if test numbers keep rising?

- Expand your CN solution flexibly by connecting up to three analysers to a track system handling up to 1,000 tubes/h.
- The cap-piercing functionality enables closed tube side sampling from multiple tube types.
- Manage your haemostasis workflow intelligently with our software solution Caresphere™.
- Our automated island solution has the advantage of not needing heavy investments while being cost-effective, space-saving, and adaptable to your haemostasis work area's workflow.

*With decades of experience in haematology and urinalysis workflow automation and thousands of satisfied customers, you can trust in Sysmex automation solutions for the haemostasis work area.*



Proactive and advanced services including remote functionalities, offering you peace of mind

Minimised tedious and time-consuming manual intervention related to sample and reagent handling

Highest productivity ever of a Sysmex haemostasis analyser: the smallest footprint and fastest throughput with the most comprehensive assay menu

More confidence to obtain valid results from abnormal and problematic samples through sophisticated processing capabilities

## Key specifications

<b>Models</b>	CN-3000, CN-6000
<b>Principles/technologies</b>	clotting, chromogenic, latex IA, aggregation, CLEIA*
<b>Throughput</b>	CN-3000: PT: 225 tests/h; PT/APTT: 215 tests/h CN-6000: PT: 450 tests/h; PT/APTT: 401 tests/h
<b>Analysis methods</b>	dilution measurement, multi-dilution (MDA), cross-mixing, automated measurement (repeat, re-dilution, reflex), clot waveform analysis (CWA)**
<b>Light source</b>	LED (36,000 h) with multi-wavelength capability (340 nm, 405 nm, 575 nm, 660 nm, 800 nm)
<b>Pre-analytical checks</b>	HIL check (assay-based), sample volume check
<b>Loading capacity</b>	30 tubes with standard sampler; continuous loading 120 tubes with sampler module***; continuous loading
<b>STAT position STAT TAT</b>	1 position with cap-piercing (micro mode is not available) PT: 4.5 min
<b>Reagent positions Buffer positions</b>	38 positions 6 positions (room temperature)
<b>Storage temperature</b>	4–12 °C in the reagent cooling unit (ambient temperature 15–28 °C)
<b>Traceability</b>	available via lot#, cal#, operator ID, QC result, operation log, etc.
<b>QC method QC record</b>	Westgard, Xbar, L-J up to 40 QC files with 1,200 points/file import previous QC data and make QC graph time span, scheduling (e.g. 9:00, 12:00, ...), switch to new vial, test#, specified vial QC (selectable)
<b>Automated QC Interlaboratory comparison</b>	Caresphere™ XQC
<b>Display monitor</b>	23 inch touch screen
<b>LAS connection</b>	available, including CP side sampling
<b>Dimensions/weight W x H x D [mm/kg]</b>	595* x 1,350 x 906 / 230 (PU-17 is included, w/o PC/monitor) 1720 mm including cuvette waste box with optional sampler/wagon and cuvette waste box: 1,060 x 1,350 x 1,030 mm
<b>Power supply</b>	main unit: AC 100–240 V / 1080 VA or less pneumatic unit: 100–240 V / 250 VA or less

\* under development | \*\* research use only | \*\*\* optional

**Authorised representative (EC REP): Sysmex Europe GmbH**  
Bornbarch 1, 22848 Norderstedt, Germany - Phone +49 40 52726-0 - Fax +49 40 52726-100 - info@sysmex-europe.com - [www.sysmex-europe.com](http://www.sysmex-europe.com)  
**Manufacturer: Sysmex Corporation**  
1-5-1 Wakinohama-Kaigandori, Chuo-ku, Kobe 651-0073, Japan - Phone +81 78 265-0500 - Fax +81 78 265-0524 - [www.sysmex.co.jp](http://www.sysmex.co.jp)  
You will find your local Sysmex representative's address under [www.sysmex-europe.com/contacts](http://www.sysmex-europe.com/contacts)

Fully automated haemostasis analysers

# CN-3000/CN-6000



Power up your haemostasis lab

[www.sysmex-europe.com](http://www.sysmex-europe.com)



# Power in a new dimension

Your investment today holds the power to satisfy tomorrow's needs.



## Powerful productivity

Less space needed, more possibilities gained: CN-Series' ergonomic design paired with its ultra-high throughput leads to unmatched productivity per square metre, complemented by a wide assay portfolio to give you the utmost room for growth.



## Operational power

Bring ease of use to a new level with CN-Series. The systems actively support the user for a daily routine experience that is as smooth as possible, and minimise the need of hands-on time.



## Analytical power

Make decisions confidently based on your results. Even from difficult samples, CN-Series provides you reliable results straight away, thanks to its powerful technologies and processing capabilities.



## Powerful services

Choosing Sysmex as a partner in your lab sets new standards for your peace of mind. Maximise your analyser uptime and performance quality with the advanced services Sysmex and CN-Series offer.

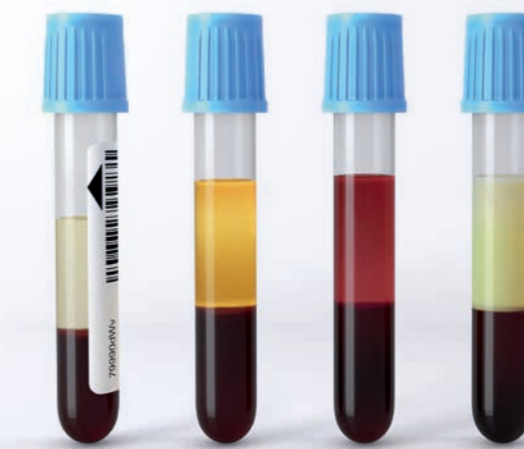


## Time is money?

- Shorten your turnaround times with CN's high throughput of up to **450 tests/h**.
- Use one system for routine and specialty assays – CN offers you the opportunity, including e.g. **platelet aggregation** and **DOAC** assays.
- **Save lab space** without compromising on speed. CN does not need to be big to be powerful.
- Get more analyses out of less volume: CN requires only a **minimal sample dead volume**.

## Difficult or critical sample?

- Not all samples coming to the lab are perfect. CN identifies sub-optimal samples with its **HIL** and **sample volume checks**.
- With its proven **multi-wavelength technology** for clotting, chromogenic, platelet aggregation and immunoassays, CN analyses samples reliably, even with demanding assay profiles.
- Assess comprehensive coagulation functions through CN's **clot waveform analysis (CWA)**.
- CN makes inhibitor testing more convenient, thanks to its on-board **cross-mixing** functions.

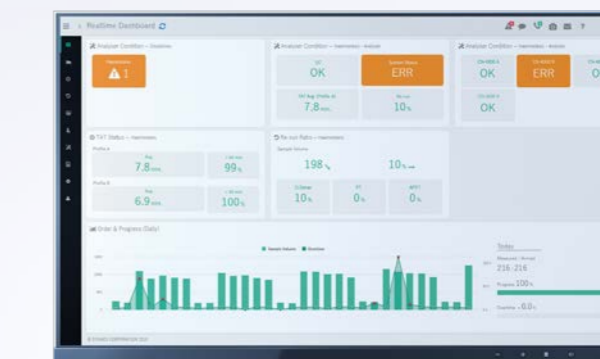


## Another busy working day ahead?



- CN is here to help: the system tells you up front how many vials of which reagent it needs to run the planned daily routine **without interruption**.
- Spare yourself manual dilutions of **platelet aggregation** agonists with CN's **automatic dilution function**.
- You can **connect** your CN directly **to your water purification system** so you do not have to carry rinse water tanks around.
- Run up to **120,000 samples** **without changing the piercer**.
- LED **light sources** with true **longevity** of **up to five years** – and without user maintenance.

## Tired of preventable downtime?



- CN proactively helps **preventing sudden downtime** by technical self-check functions allowing real-time diagnosis.
- Together with Sysmex's **remote support** capabilities, CN downtime can be minimised and made to fit in better with the lab's schedule.
- Should **trouble-shooting** become necessary, CN's **interactive guide** leads the operator easily through the necessary actions and countermeasures.

With over 50 years' experience and a global presence in more than 190 countries, Sysmex provides high-quality products, service and support to healthcare professionals in the field of *in vitro* diagnostics around the world.

