

# CA-660

Simple to use. Strong in diagnostics.



# Coagulation testing is increasingly important



In haemostasis, test results can point out major clinical issues, some of which can be life-threatening if not dealt with swiftly and accurately. Confidence in the subsequent clinical decision-making is therefore essential. You need equipment that performs reliably, produces results of consistent, high quality at all times and helps you to meet TAT demands.

## Coagulation testing you can rely on

The CA-660\* is a compact, fully automated coagulation analyser that combines proven and successful characteristics – such as the optical detection technology and the reagent system of its predecessors – with new features. In addition to routine testing, it also offers specialty coagulation testing such as D-dimer and vWF activity, and so provides a complete patient profile. It is an attractive choice as a primary analyser for low-volume haemostasis laboratories, but you can equally use it as a powerful backup instrument in a larger lab. The CA-660 has a solid construction, is hard-wearing and robust. And with its reliable performance, it will support you day in, day out, for years to come.

*The CA-600 series models are based on Silent Design®, Sysmex's concept that contributes to a more enjoyable workplace experience by putting people first and optimising the interaction between the individual and the devices they use day in, day out.*

## A reliable partner for your lab

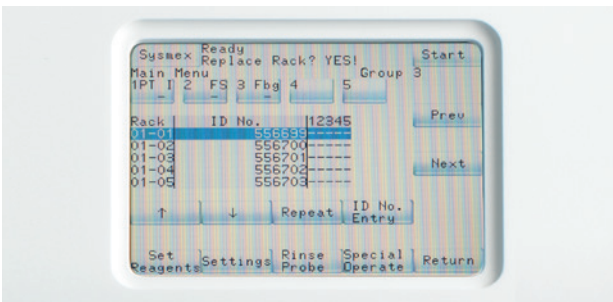
Sysmex is a total solution provider for laboratories of all sizes around the world. With fifty years' experience in lab haematology, and over thirty creating coagulation analysers, our solutions meet real laboratory and user needs – from the smallest detail to large-scale workflow design. With representative sites in nearly all countries, our supply and service are leading in our field.

We provide a wide range of scientific articles on haemostasis, from topics in our SEED (Sysmex Educational Enhancement and Development) database to specific details on our assays and technology. These can help you to optimise your lab testing and interpret the analysers' results, and in doing so offer patients the best clinical care. Your local Sysmex representative can provide you with more information.

## Strong performance – high-quality results

The CA-660 runs most clinically important clotting, chromogenic and immunological analyses. In addition to routine tests, this means you can also perform a wide range of specialty testing to further investigate haemostatic disease status and perform fibrinolysis tests.

The CA-660 offers added clinical value and can perform a fully automated, precise D-dimer determination. This can help you monitor patients and rule out critical conditions in a wide range of coagulopathies. This test is classically used for excluding deep venous thrombosis and pulmonary embolism. It is also useful for managing the increased risk of thrombosis in HIV patients undergoing retroviral treatment. This means your results can now contribute even more effectively to patient care as you can relate them to disease prognosis.



## Simplifying daily laboratory work

Thanks to a colour LCD touch screen and an integrated barcode reader, the CA-660 is safe and easy to use. And because sample identification is automated, you can be confident you're always running the tests that are needed on the right samples. You no longer have to batch samples either, which shortens your result turnaround time, also for D-dimer analyses. Since calibration curves are easily established, this reduces the time you need for calibration. In addition, the CA-660's ease of use really helps to minimise the risk of errors.

Maintenance requirements are low, which ensures the system operates efficiently with little downtime. Integrated reagent cooling increases on-board reagent stability. And thanks to a range of sensor functions, the system is safe to operate.

## Set for today. And for tomorrow. Advanced software, data handling and networking

The CA-660 is easy to service thanks to its error log capacity and a new type of memory card. It's easier to set up and update the analyser, and to back up and restore user data and settings.

Using an optional hand-held 2D barcode reader, you can register data of reagents, standards and controls safely, simply and quickly, free up time for other processes and improve your lab's productivity. This reagent management system and positive sample recognition will also help you to meet the growing regulatory demands with respect to documentation, accreditation and traceability.

The CA-660 can help you and your lab to stay one step ahead: via a dedicated interface, you can connect it to SNCS (Sysmex Network Communication System), Sysmex's online service, which offers a range of innovative service and support functionalities.

\* In certain countries the CA-650 model is available instead of CA-660. Apart from different detector wavelengths adapted to the reagents used only in those countries, both models are identical.

## Key specifications

<b>Detection principles</b>	clotting: scattered light detection method chromogenics: colorimetric method immunoassay: latex-enhanced turbidimetric method
<b>No. of detector channels</b>	clotting: 4 channels chromogenics: 1 channel immunoassay: 1 channel
<b>Parameters</b>	clotting: PT, APTT, Fbg, TT, extrinsic factor assays (II, V, VII, X), intrinsic factor assays (VIII, IX, XI, XII), lupus anticoagulant (screening and confirmation), protein C, batroxobin chromogenics: antithrombin, $\alpha$ 2-antiplasmin, plasminogen, protein C, heparin and anti-Xa assays (UFH, LMWH) immunoassay: D-dimer, vWF:Ag, vWF Ac
<b>Throughput</b>	max. 60 tests per hour
<b>Test protocols</b>	up to 14 programmable
<b>STAT</b>	1 dedicated position
<b>Sample volumes</b>	min. 50 $\mu$ L (PT, APTT, TT) min. 10 $\mu$ L (Fbg, AT III) min. 5 $\mu$ L (factor assays) min. 8 $\mu$ L (D-dimer)
<b>Auto-dilution function</b>	for accurate measurement of abnormal fibrinogen or D-dimer levels
<b>Reagent capacity</b>	13 positions (4 cooled and 3 dedicated to diluents, buffers or cleaning reagents)
<b>Quality control</b>	Xbar / L-J control: 6 files at 180 points, 14 parameters
<b>Data storage</b>	up to 600 samples / max. 3,000 tests
<b>Interfaces</b>	<ul style="list-style-type: none"><li>■ colour LCD touch screen (user interface)</li><li>■ built-in thermal printer, prints data and graphics</li><li>■ built-in barcode reader for samples and STAT</li><li>■ 2D hand-held barcode reader for reagents (ISI, lot#, expiry date), calibrators (assigned value, lot#, expiry date), controls (target/limit, lot#, expiry date), samples / STAT (for sample search) (optional)</li><li>■ LIS (serial)</li><li>■ SNCS capability (dedicated LAN port)</li></ul>
<b>Dimensions/weight (main unit)</b>	566 x 490 x 490 (w x h x d, mm) / approx. 42 kg

**Authorised representative: Sysmex Europe GmbH**  
Bornbarch 1, 22848 Norderstedt, Germany · Phone +49 40 52726-0 · Fax +49 40 52726-100 · info@sysmex-europe.com · [www.sysmex-europe.com](http://www.sysmex-europe.com)

**Manufacturer: Sysmex Corporation**  
1-5-1 Wakinohama-Kaigandori, Chuo-ku, Kobe 651-0073, Japan · Phone +81 78 265-0500 · Fax +81 78 265-0524 · [www.sysmex.co.jp](http://www.sysmex.co.jp)

You will find your local Sysmex representative's address under [www.sysmex-europe.com/contacts](http://www.sysmex-europe.com/contacts)